



DataChart^â QuadTemp

4 Channel Thermocouple Based Temperature Data Logger

Features

- 4 Thermocouple Channels and 1 Ambient
- Automatic Thermocouple Linearization
- Automatic Cold Junction Compensation
- Thermocouple Types J, K, T, E, R, B, S, N
- Memory: 26,214 readings per channel
- Programmable Start Time
- Reusable
- Small Size
- User Calibration through Software
- No Programming Experience Necessary
- Real Time Operation
- Low Cost
- Quick Setup
- Record Keeping Simplified

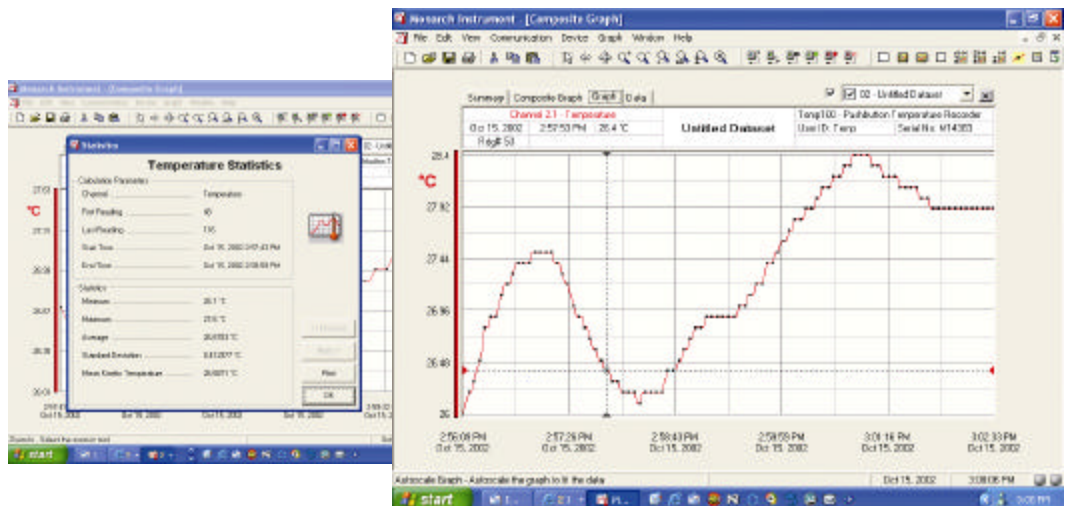
Applications

- Remote Temperature Recording
- Implementing HACCP Programs
- Medical/Pharmaceutical Monitoring
- Extreme Temperature Monitoring
- Environmental Studies
- Replace Costly Strip Chart Recorders
- HVAC



Description

The QuadTemp is a 4 channel, battery powered, stand-alone, thermocouple based temperature data logger. This all-in-one compact, portable, easy to use device will measure and record up to 26,214 temperature measurements per channel. The QuadTemp is a major leap forward in both size and performance. Its real time clock ensures that all data is time and date stamped. The storage medium is nonvolatile solid state memory, providing maximum data security even if the battery becomes discharged. Its small size allows it to fit almost anywhere. Data retrieval is simple. Plug it into an empty com port and our easy to use software does the rest.



Specifications

Internal Channels: 1

Temperature Range: -40°C to +80°C

Calibrated Temperature Accuracy: ±0.5°C
(0°C to 50°C)

Temperature Resolution: 0.1°C

Remote Channels: 4

Thermocouple connection: min-plug

Cold Junction Compensation: Automatic

| T/C | Range | Resolution | Accuracy* |
|-----|-------------------|------------|-----------|
| J | -200°C to +1190°C | 0.1°C | 0.5°C |
| K | -260°C to +1370°C | 0.1°C | 0.5°C |
| T | -260°C to +390°C | 0.1°C | 0.5°C |
| E | -260°C to +990°C | 0.1°C | 0.5°C |
| R | -40°C to +1760°C | 0.1°C | 0.5°C |
| S | -40°C to +1760°C | 0.1°C | 0.5°C |
| B | +50°C to +1810°C | 0.1°C | 0.5°C |
| N | -260°C to +1290°C | 0.1°C | 0.5°C |

* accuracy does not include errors due to thermocouple

Temperature Calibration: Digital calibration through software.

N.I.S.T. Traceable: N.I.S.T. certificates available

Calibration Date: Automatically recorded within device to alert user when calibration is required.

Recording Interval: 30/minute to 2/day selectable.

Start Time: Start time and date are programmable through software.

Real Time Recording: Device may be used with PC to monitor and record data in real time.

Memory: 26,214 temperature readings per channel.

User-Replaceable Battery: 9 Volt, 1 year typical.

Time Accuracy: ±1 min/month at 20°C

Data Format: Date and Time stamped, °C, °F, °K, °R.

Shock resistance: Drop proof to 5'.

Weight: 12oz. (340g)

Computer Interface: PC Serial or RS232C COM with interface cable.

Software: Windows®95/98/NT/2000/XP based software for complete control and operation.

Operating Environment: -40°C to +80°C, 5% to 95% RH (non-condensing)

Dimensions: 3.5 x 4.4" x 1.0" (89mm x 111mm x 26mm)

Material: Black Anodized Aluminum

Software Features

The software used to operate the QuadTemp requires no programming skills, enables users to effortlessly select reading rate, user ID and initiate the start of data collection within moments after user connects hardware. After retrieving the data, it may be viewed instantly in graphical or tabular form.

Zoom In/Out: Use mouse to click and drag to select area for zooming in or out.

Statistics: min, max, mean, mean kinetic temperature, standard deviation

Cursor: Use mouse to click on graph to obtain specific data point information.

Programmable Start Time: Program start time and date through software.

Real Time Operation: Convert PC into strip chart recorder for real time data collection.

Annotating Data: All data points may be easily annotated.

Printing: Automatic printing of data in graphical or tabular form

Units: °C, °F, °K, °R.

User ID: Programmable through software and stored within device.

AutoScale: Autoscale function may be enabled or disabled by user.

Calibration: Automatic calibration in software and calibration parameters stored within device

Exporting Data: All data can be directly exported to Microsoft Excel® or to text format.

Graph Grid Size: Many options for grid size available.

ORDERING INFORMATION

| <u>Item No.</u> | <u>Model</u> | <u>Description</u> |
|-----------------|----------------|--|
| 5399-0113 | QuadTemp | 4 Channel Thermocouple Based Temp. Data Logger |
| 5399-9901 | IFC101 | 9 Pin Computer Interface Cable Software & Manual |
| 5399-9999 | N.I.S.T. Cert. | N.I.S.T. Calibration Certificate |

Ask About Our Other Data Loggers

| | |
|-----------------|--------------------|
| Temperature | 4.0 to 20.0 mA |
| Humidity | Pulse/Counter |
| Pressure | Submersible |
| pH | Level |
| Shock/Vibration | Multi-Parameter |
| Voltage | Intrinsically Safe |
| RF Transmitters | |

Visit Monarch Instrument on the web at www.monarchinstrument.com

