

Track-It™ Data Loggers



QUICK START GUIDE

Para la traducción española, ver CD
Für die deutsche Übersetzung, siehe CD
Pour la traduction française, voir le CD
Per la traduzione italiana, vedi CD

2 Install data logger battery (if required)

Install the battery that was supplied with your Track-It™ data logger. Refer to the diagrams below for installation. **Certain models will have battery pre-installed.**

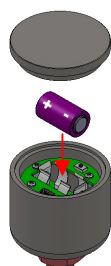
Remove threaded end cap with coin and insert battery as shown

Remove threaded cap and insert battery as shown

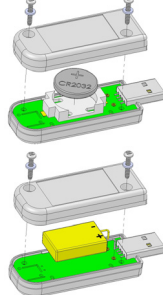
Batteries in "Thumb Drive" type loggers are pre-installed



Rugged Temp
3.6V 1/2AA Lithium
High Temperature



Pressure/Temp
3.6V 1/2AA

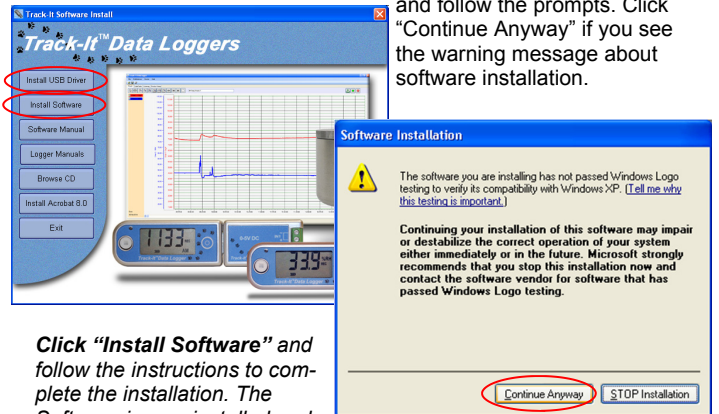


Temp, RHTemp, DC I/V, AC Event
3V CR2032 coin cell
Or 3.6V EF651625 (LTC-7PN)

1 Install USB driver and Track-It™ Software

IMPORTANT! Do NOT plug the Track-It Data Logger into the USB port until AFTER the USB Drivers and Track-It Software have been installed.

Insert the Installation CD into the Drive on your PC. If the installation does not begin automatically use Windows Explorer to navigate to the CD drive, double click "CD_Start.exe", click "Install the USB Driver", and follow the prompts. Click "Continue Anyway" if you see the warning message about software installation.

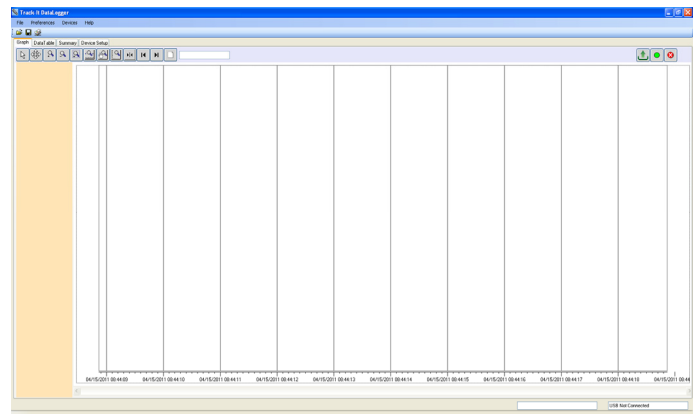


Click "Install Software" and follow the instructions to complete the installation. The Software is now installed and ready to use.

3 Connect data logger and Start Track-It™ Software

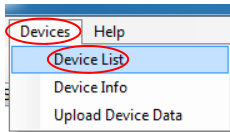
Plug the Track-It logger into an available USB port on the PC. Some models plug directly into the USB port others connect to the USB port with a cable (which is supplied). If the Found New Hardware Wizard appears, follow the prompts to complete the installation.

Start the Track-It Software by double clicking the Track-It icon (shown at right) on your PC or from the Start menu.

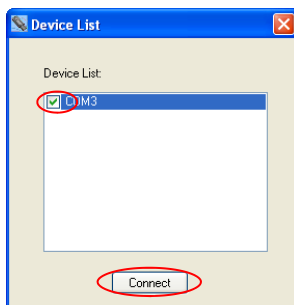


4 Connect to your data logger

Select the “Devices” menu option from the top menu list of the Track-It software then “Device List” from the drop down menu.

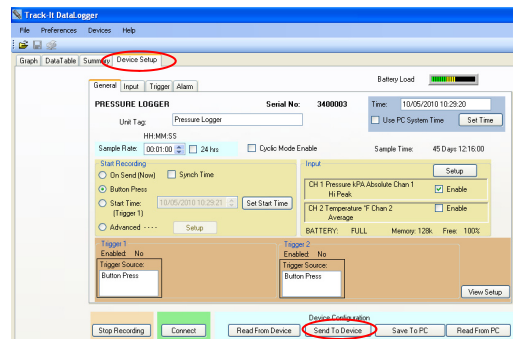


A window will pop up and show the Com Port that the Track-It data logger has been assigned to. Check the box adjacent to this Com Port and click the “Connect” button



5 Configure and start logging data

Select the “Device Setup” tab as shown. The software will automatically retrieve and display the data logger configuration.



Review default factory configuration settings and make any necessary changes - sample rates, triggers, alarms etc. Be sure that the time and date is set properly.

Click the “Send To Device” button under the Device Configuration section of the window. **Your data logger is now operational!**

NOTE: The Track-It Logger will only start recording per the “Start Recording” configuration setting (On Send, Button Press, etc.) once the “Send To Device” button is clicked.

LED INDICATORS (for units without displays)

LED indicators are provided to notify the user of data logger status. Pushing and releasing the data logger button will cause the LED to flash in various patterns to indicate status. Pressing and holding the data logger button will change record mode or reset alarms (these features need to be configured in the software prior to use). The table below shows the push-button / LED functionality.

| STATUS - Press & Release Button | | | STATUS |
|---------------------------------|--------|-------|-------------------------------------------------------------------------------------------------------------------------------------------------------------------------------------------------------------------------------------------------------------------------------------------------------------------------------|
| LED Pattern | | | |
| Lo Batt. | Record | Alarm | <p>LED Sequence</p> <p>Low battery - one RED blink (No red if battery OK)</p> <p>Recording or triggered to record - fast GREEN/RED blink</p> <p>Idle/Not recording - one long GREEN blink</p> <p>Alarm occurred - one long RED blink (No red if no alarm)</p> <p>Unit is not set up - slow RED/GREEN blink, connect to PC</p> |

| CHANGE STATE - Press & Hold Button | | RESULT OF BUTTON RELEASE |
|------------------------------------|---------|-----------------------------------------------------------|
| LED pattern | | |
| Release | Release | Release button while LED GREEN - Turn record mode on/off* |
| Release | Release | Release button while LED RED - Reset alarm indication* |
| Release after LED's go off | | Release button when LED goes off - No change |

*NOTE: Feature must be enabled in software

LCD DISPLAYS

Some Track-It data loggers are equipped with LCD displays. The display is user programmable and can display real time information including time, date, measured values with engineering units, battery level, alarm conditions, etc. LED indicators on units with LCD displays are also user programmable. See operation manual for full description and set up instructions.



Icon Indications

↑ ↓ Up arrow = Hi alarm, Down arrow = Lo alarm. Blinks if any alarm is current. On steady if any alarm has been detected but not current.

REC REC On steady = Triggered to record but not currently recording. Blinking = recording data

Battery Condition: Indicates full, half and empty. Blinks = too low to function reliably.

Bell On steady = alarms enabled. Blinks if any alarm detected