



MONARCH INSTRUMENT

Innovation in Instrumentation

DataChart® SafeTemp

Temperature Data Logger and Alarm Indicator

Features

- Temperature Range: -100°C to + 260°
- Alarm Indicator
- External Temperature Probe
- Memory: 9,362 readings
- Push Button Start/Stop
- Multiple Start/Stop
- Dual Channel-Ambient and External T/C
- Reusable
- Miniature Size
- N.I.S.T. Traceable
- User Calibration through Software
- No Programming Experience Necessary
- Real Time Operation
- Low Cost
- Quick Setup
- Record Keeping Simplified

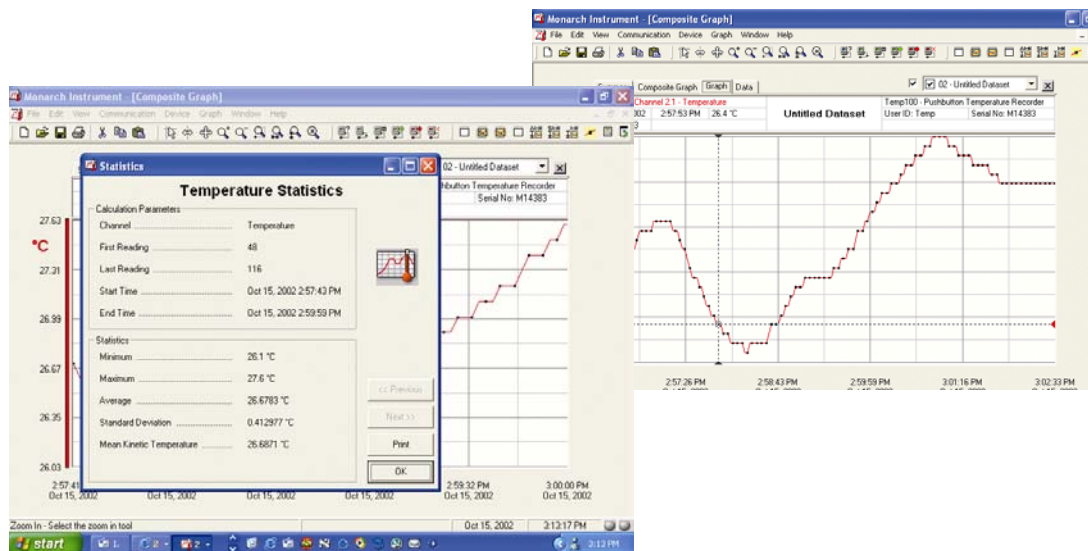
Applications

- Food Storage Temperature Monitoring
- Implementing HACCP Programs
- Extreme Temperature Monitoring
- Oven Profiling
- Environmental Studies
- Replace Costly Strip Chart Recorders
- Hot Box Holding Cabinet Monitor



Description

The SafeTemp is a miniature, battery powered, stand-alone, temperature data logger and alarm indicator. This all-in-one compact, portable, easy to use device will measure and record up to 9,362 temperature measurements. Alarm set points stored within the device are compared with the temperatures being read. If the temperature goes out of the specified range for more than 10 minutes, then the LED indicator will start flashing. It will continue to flash until it is acknowledged by the user. This is ideal for verifying that food has been stored at the proper temperature. The SafeTemp is a major leap forward in both size and performance. Its real time clock ensures that all data is time and date stamped. The storage medium is nonvolatile solid state memory, providing maximum data security even if the battery becomes discharged. Its small size allows it to fit almost anywhere. Data retrieval is simple with our easy to use software.



Specifications

Temperature Sensor: Type K

Thermocouple

Thermocouple Connection: Female subminiature

Cold Junction Compensation: Automatic

Temperature Measurement Range: -100°C to +260°C (-148°F to +500°F)

Calibrated Temperature Accuracy: ±0.5°C

Temperature Resolution: 0.1°C (0.18°F)

Temperature Calibration: Digital calibration is available through software.

N.I.S.T. Traceable: N.I.S.T. certificates available

Calibration Date: Automatically recorded within device to alert user when calibration is required.

Recording Interval: 1 reading every 5 minutes. Factory set.

Push Button: The SafeTemp can be started or stopped using the push button or directly from the PC.

High Alarm: Factory set to 200°F ±5°F. Factory adjustable.

Low Alarm: Factory set to 140°F ±5°F. Factory adjustable.

Real Time Recording: Device may be used with PC to monitor and record data in real time.

Operations Indicator: Green LED flashes to indicate device is operating.

Alarm Indicator: Red LED flashes to indicate alarm condition.

Memory: 9,362 remote temperature readings max.

User-Replaceable Battery: 6 months typical.

Time Accuracy: ±1 min/month at 20°C

Data Format: Date and Time stamped, % RH, mg. of water vapor concentration, °C, °F, °K, °R.

Shock resistance: Drop proof to 5'.

Weight: 1 oz. (30g)

Computer Interface: RS232C Serial Port

Software: Windows®95/98/NT/2000/XP based software for complete control and operation.

Operating Environment: -40°C to +80°C, 5% to 95% RH (non-condensing).

Dimensions: 1.4"Hx2.2"Lx0.6"D (36mm x 56mm x 16mm)

Material: ABS Plastic

Software Features

The software used to operate the SafeTemp Recorder requires no programming skills. After retrieving the data, it may be viewed instantly in graphical or tabular form.

Zoom In/Out: Use mouse to click and drag to select area for zooming in or out.

Statistics: min, max, mean, mean kinetic temperature, standard deviation

Cursor: Use mouse to click on graph to obtain specific data point information.

Programmable Start Time: Program start time and date through software.

Real Time Operation: Convert PC into strip chart recorder for real time data collection.

Annotating Data: All data points may be easily annotated.

Printing: Automatic printing of data in graphical or tabular form

User ID: Programmable through software and stored within device.

AutoScale: Autoscale function may be enabled or disabled by user.

Calibration: Automatic calibration in software and calibration parameters stored in device

Exporting Data: All data can be directly exported to Microsoft Excel® or to text format.

Graph Grid Size: The grid size is user selectable.

ORDERING INFORMATION

Item No.	Model	Description
5399-0105	Safe Temp	Thermocouple Based Temp Data Logger w/pushbutton start/stop
5399-9901	IFC101	9 Pin Computer Interface Cable Software & Manual
5399-9999	N.I.S.T. Cert.	N.I.S.T. Calibration Certificate

